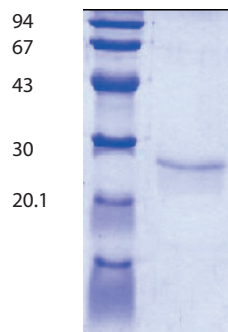


INTRODUCTION

The tissue inhibitor of metalloproteinases (TIMP-1) is a glycoprotein with a molecular mass of about 28-kDa. The secreted protein consists of 184 amino acids, six disulfide bonds and two glycosylation sites containing N-linked oligosaccharides. TIMP-1 specifically inhibits the extracellular-matrix-degrading metalloproteinases such as collagenase, gelatinase and stromelysin. It has no activity on mammalian membrane metallo-proteinases, procollagen peptidase, or on bacterial metalloproteinases such as thermolysin.



PURIFIED PROTEIN

Human tissue inhibitor of matrix metalloproteinases expressed in Sf9 cells

PRESENTATION

Liquid, in 50 mM Tris-HCl, pH 7; 200 mM NaCl; 5 mM CaCl₂; 1 μM ZnCl₂; 0.05% Brij 35; 0.05% NaN₃

CONCENTRATION

200 μg/ml

PURITY

>92%, homogenous by electrophoresis and western blotting analysis.

ACTIVITY

It is recommended to perform a preincubation of about 20 min / 37°C which allows the formation of the enzyme-inhibitor complex

CONTAMINANTS

No contaminants are detectable

For research use only.



USA: MD Biosciences, Inc. 1000 Westgate Drive, Suite 162, St. Paul, Minnesota 55114 toll free: 1-888-USMDBIO tel: (651) 641-1770 fax: (651) 641-1773

Europe: div. of Morwell Diagnostics GmbH, Gewerbestrasse 9, 8132 Egg b. Zürich, Switzerland tel: (+41-1) 986 2628 fax: (+41-1) 986 2630

Israel: Weizmann Science Park, Einstein Street 7, Nes Ziona 73400, Israel toll free: 1 800 200 MDB tel: (08) 940 6800 fax: (08) 940 9973

STABILITY & STORAGE The TIMP-1 is very stable if stored at -70°C and can be kept at -20°C for several month and at 4°C for weeks without significant loss of activity. Repeated freezing and thawing should be avoided.

REFERENCES

- Docherty AJP et al. (1992), *Tibtech* 10: 200-207.
- Murphy G et al., (1987) *Biochem. J.* 248: 265-268.
- Stettler-Stevenson WG et al. (1989) *J Biol Chem.* 264: 17374.
- Cawston TE et al. (1983) *Biochem. J.* 211: 3131-318.